

1624 Avex

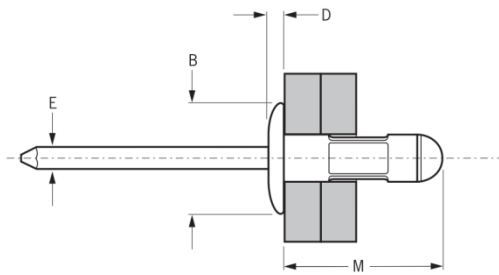
Dome head · Steel body · Steel stem · Multi-grip
3.2 mm (1/8") - 4.8 mm (3/16")

Features

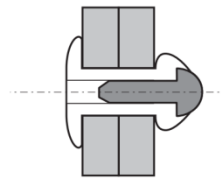
- Multi-grip capability accommodates wide variations in material thickness
- Good hole fill provides strong, vibration resistant joints
- Compensates for irregular, oversized, slotted or misaligned holes
- Can stop sheet movement in non-standard holes
- Retained stem avoids damage, electrical problems or rattling caused by loose stems
- Provides a large blind side bearing area against the rear sheet
- Spreads the tail bearing load/clamp load on the rear sheet making it ideal for use in thin sheet materials

Material

- Body: Low carbon steel, zinc coated
- Stem: Low carbon steel, zinc coated



Before Placement



After Placement

Part No.	Size ø	Grip Range		Hole Size		M max.	øB max.	D max.	øE max.	Shear (typical) kN	Tension (typical) kN
		min.	max.	min.	max.						
01624-00411	3.2 (1/8")	1.12	4.0	3.28	3.40	11.4	7.55	1.19	2.12	1.3	1.7
01624-00414		3.7	6.6			13.8					
01624-00508	4.0 (5/32")	2.0	4.0	4.10	4.22	9.6	8.44	1.57	2.77	1.9	2.3
01624-00514		1.4	5.0			13.7					
01624-00612	4.8 (3/16")	1.2	4.8	4.90	5.03	13.5	10.09	2.13	3.42	3.6	3.3
01624-00616		4.0	6.3			15.7				4.5	3.4



Can't find what you are looking for?

We can provide customized finishing and colouring.
Contact your nearest [Gripwell](#) team for assistance!